

Parkheath

Sold on Service

Denning Road NW3
Asking Price £650,000

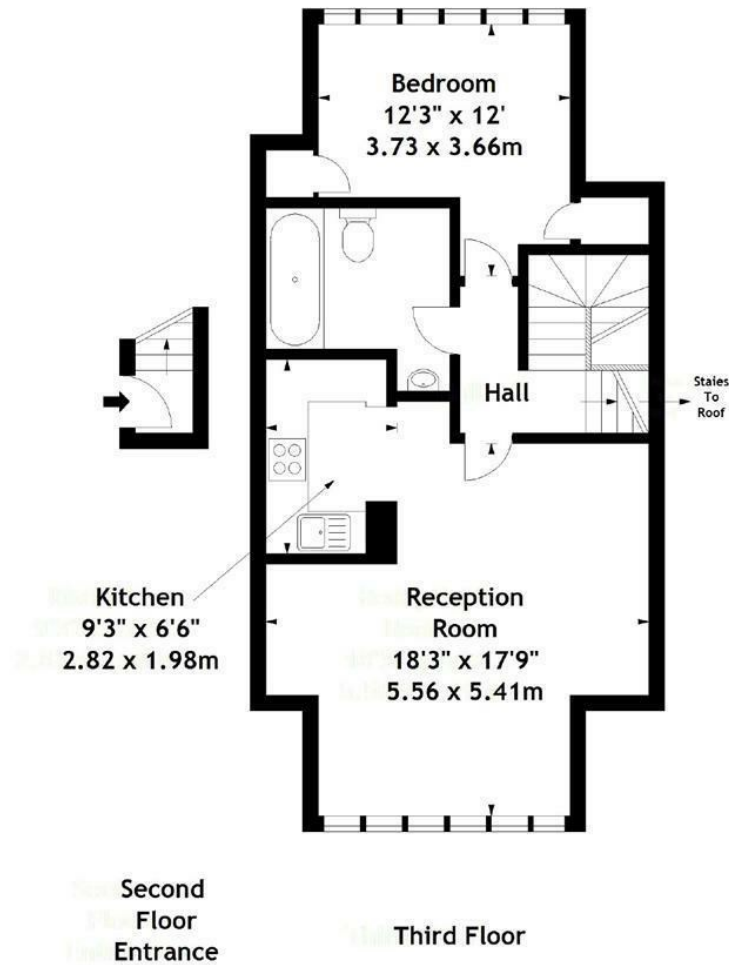


Exceptional 1 bedroom apartment
Set in the heart of Hampstead Village
An impressive Victorian period residence
Lovely roof top views
Top floor flat- 621 sq ft approx

Spacious and bright 18ft reception
9ft semi open plan kitchen
12ft bedroom
Share of freehold
Close to Hampstead Heath and all local amenities

Belsize Park Office 020 7431 3104

Denning Road, NW3
Approx. Gross Internal Area
621 Sq Ft - 57.69 Sq M



Measured in accordance with RICS guidelines. Every attempt is made to ensure accuracy, however all measurements are approximate.
This floor plan is for illustrative purposes only and is not to scale.
© Datography Ltd 2016
Photographs * Floorplans * Virtual Tours
Tel: 0845 643 4401 www.datography.com

The particulars do not constitute part of an offer or contract. The particulars, including text, photographs and plans, are for the guidance only of prospective purchasers/tenants and must not be relied upon as statements of fact. The descriptions provided therein represent the opinion of the author and whilst given in good faith should not be construed as statements of fact. Nothing in these particulars shall be deemed a statement that the property is in good condition or otherwise or that any services or facilities are in good working order. All measurements are approximate